

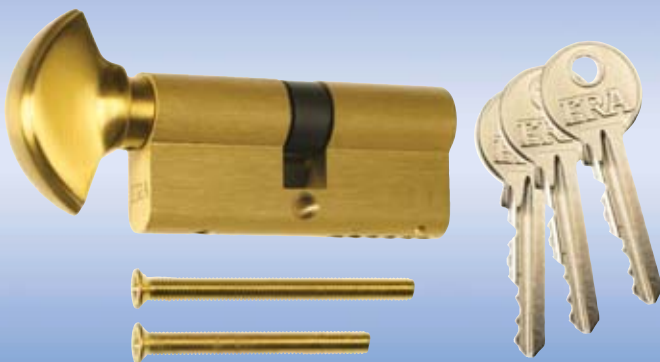
# BRITISH STANDARD EURO & OVAL PROFILE CYLINDERS



**DOUBLE EURO PROFILE CYLINDER**



**DOUBLE OVAL PROFILE CYLINDER**



**DOUBLE EURO PROFILE THUMBTURN CYLINDER**

- This exciting new range of British Standard Cylinders combines quality, reliability and a competitive pricing structure.
- Cylinders in the range have been successfully tested for conformity to all of the requirements of BS EN 1303:2005\* only when used in conjunction with the ERA Cylinder Rose ref 263.
- High physical security.
- Six pin tumblers incorporating anti-picking features.
- Hardened pins and mushroom rollers for drill resistance.
- The plug itself is further strengthened from screw attack.
- 30,000 differs.
- Available Master-Keyed, Differ and Keyed Alike.
- Each Cylinder is supplied with 3 keys.

\*Key entry side only on thumbturn cylinders

## ORDERING DETAILS

**Dimensions No. of Finish**  
(mm) Pins  
**A B C**

### Double Euro Profile BS Cylinders

35	35	70	6	Brass, Boxed	<b>4260-31</b>
35	35	70	6	Brass, Clam	<b>4260-32</b>
35	35	70	6	Satin, Boxed	<b>4260-51</b>
35	35	70	6	Satin, Clam	<b>4260-52</b>
35	35	70	6	Chrome, Boxed	<b>4260-61</b>
35	35	70	6	Chrome, Clam	<b>4260-62</b>

### Double Oval Profile BS Cylinders

35	35	70	6	Brass, Boxed	<b>4265-31</b>
35	35	70	6	Brass, Clam	<b>4265-32</b>
35	35	70	6	Satin, Boxed	<b>4265-51</b>
35	35	70	6	Satin, Clam	<b>4265-52</b>
35	35	70	6	Chrome, Boxed	<b>4265-61</b>
35	35	70	6	Chrome, Clam	<b>4265-62</b>

### Double Euro Profile Thumbturn BS Cylinders

35	35	70	6	Brass, Boxed	<b>4270-31</b>
35	35	70	6	Satin, Boxed	<b>4270-51</b>
35	35	70	6	Chrome, Boxed	<b>4270-61</b>

### Double Oval Profile Thumbturn BS Cylinders

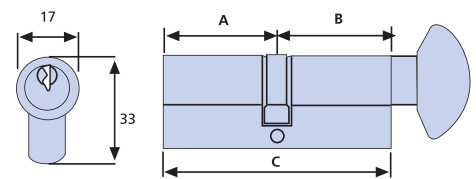
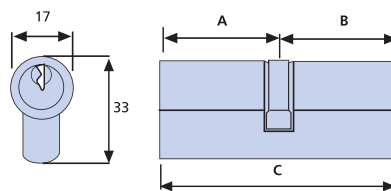
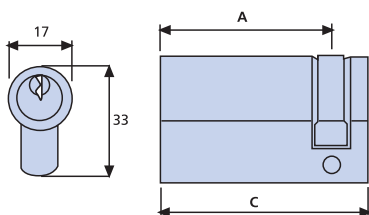
35	35	70	6	Brass, Boxed	<b>4273-31</b>
35	35	70	6	Satin, Boxed	<b>4273-51</b>
35	35	70	6	Chrome, Boxed	<b>4273-61</b>

Further sizes available - please call ERA sales for further information. Oval Profile Cylinders are also available. Clam-Packed available on certain products.

Single Euro Profile Cylinder

Double Euro Profile Cylinder

Euro Profile Thumbturn Cylinder



All dimensions in mm.

## CYLINDERS FOR LOCKS TO BS EN 1303:2005

### Digit 1

#### Category of use

One category is identified:

Grade 1: Keys shall resist a torque of 2.5Nm and still be usable.

### Digit 2

#### Durability

Three grades are identified according to the number of test cycles achieved:

Grade 4: 25,000 cycles

Grade 5: 50,000 cycles

Grade 6: 100,000 cycles

### Digit 3

#### Door mass

No requirement.

### Digit 4

#### Fire resistance

Two grades are identified as follows:

Grade 0: not suitable for fire/smoke resistant door assemblies

Grade 1: suitable for fire/smoke resistant door assemblies subject to satisfactory assessment of the contribution of the cylinder to the fire resistance of the specified fire/smoke door assemblies. Such assessment is beyond the scope of this European standard (see EN 1634-1)

### Digit 5

#### Safety

No requirement.

### Digit 6

#### Corrosion and temperature resistance

Four grades are identified as follows:

Grade 0: no corrosion or temperature resistance requirements

Grade A: BS EN 1670 Grade 3 corrosion resistance (96 hours NSS): no temperature resistance requirement

Grade B: No corrosion resistance requirement: resistance to -20/+80°C temperature extremes

Grade C: BS EN 1670 Grade 3 corrosion resistance: resistance to -20/+80°C temperature extremes

Note:

- No distinction is made between the inside and the outside of either the cylinder and/or the door.
- On completion of the test, the cylinder must operate using a maximum 1.5 Nm torque on the key.

### Digit 7

#### Key related security

Six grades are identified and the principal requirements are summarised in table 1 below:

Table 1: Key related security

	GRADE					
	1	2	3	4	5	6
Minimum number of effective differs	100	300	15,000	30,000	30,000	100,000
Minimum number of movable levers, pins, discs, etc	2	3	5	5	6	6
Coding on key could disclose combination	YES	YES	NO	NO	NO	NO
Torque resistance of plug	2.5Nm	5Nm	15Nm	15Nm	15Nm	15Nm

### Digit 8

#### Attack resistance









Three grades are identified and the principal requirements are summarised in Table 2 below. Attack resistance when used in conjunction with the ERA Cylinder Rose ref 263.

Table 2: Attack resistance

	GRADE		
	0	1	2
Resistance to drilling (nett drilling time)	-	3 mins	5 mins
Resistance to chisel attack (number of defined blows)	-	30	40
Resistance to twisting attack (number of defined twists)	-	20	30
Resistance to plug/cylinder extraction (pull load)	-	15 kN	15 kN

#### Example

The following marking denotes a cylinder meeting the required category of use Grade 1, durability Grade 6 (100,000), no requirement for door mass, no fire resistance or safety in use requirement, having Grade A corrosion resistance, Grade 4 key related security and Grade 1 attack resistance.

 1 (1)	 6 (4-6)	 - (-)	 0 (0/1)	 - (-)	 A (0/A/B/C)	 4 (0-5)	 1 (0-2)
---	---	--	---	---	---	---	---

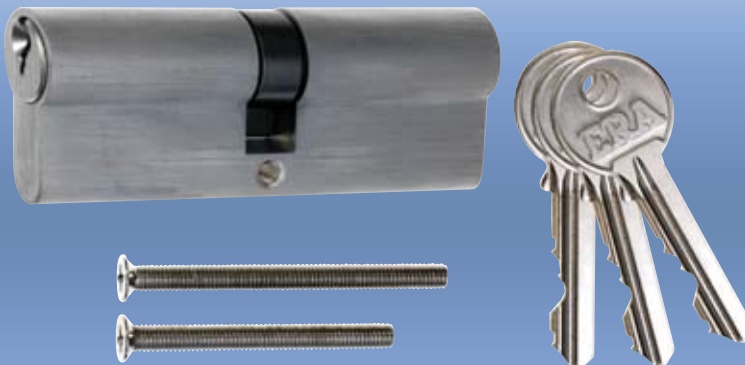
## ERA BRITISH STANDARD CYLINDERS CLASSIFICATION ACHIEVED

Category of use	Durability	Door mass	Fire resistance	Safety	Corrosion resistance & Temperature	Key related security	Attack resistance
1	6	0	1	0	C	5	2

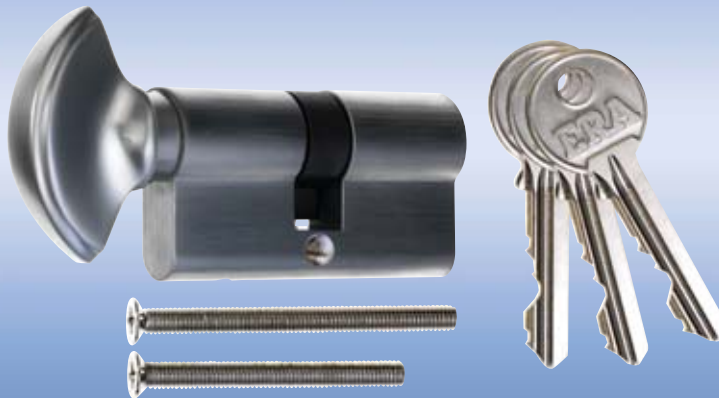
# EURO PROFILE CYLINDERS



**SINGLE EURO PROFILE CYLINDER**



**DOUBLE EURO PROFILE CYLINDER**



**DOUBLE EURO PROFILE THUMBTURN CYLINDER**

ERA offers a comprehensive selection of **Euro Profile Cylinders**, available in a vast number of sizes and types, complementing the Euro Cylinder operated Mortice Locks and Multi-Point Locks.

Available in both brass and satin finishes, the Euro Profile Cylinders are manufactured from solid brass incorporating either 5 pins (Standard), 6 pins (Security) and 6 pins (High Security).

The High Security 6 pin cylinders have anti-pick, hardened pins and four mushroom drivers, offering in excess of 100,000 key differs. (BS1303)

The **Single Euro Profile Cylinders**, allow opening from one side only. Ideal if security is required on one side and no access on the other.

The **High Security 6 pin Double Euro Cylinders** ensure controlled access from both sides of the lock.

The **Double Euro Thumbturn Cylinders** are ideal for locations that require controlled access from one direction and easy access from another.

Master Keying and Cylinders To Pass are available to special order. Each cylinder is supplied with 3 keys.

## ORDERING DETAILS

**Dimensions**   **No. of**   **Finish**  
(mm)   **Pins**

A	B	C			
<b>Single Euro Profile Cylinders</b>					
30	40	5	Satin	<b>4030-51</b>	
30	40	5	Brass	<b>4031-31</b>	

A	B	C			
<b>Double Euro Profile Cylinders</b>					
30	30	60	5	Satin	<b>4050-51</b>
30	30	60	5	Brass	<b>4051-31</b>
30	40	70	5	Satin	<b>4054-51</b>
30	40	70	5	Brass	<b>4055-31</b>
35	35	70	5	Satin	<b>4110-51</b>
35	35	70	5	Brass	<b>4110-31</b>
35	35	70	6	Satin	<b>4066-51</b>
35	35	70	6	Brass	<b>4067-31</b>
35	40	75	6	Satin	<b>4068-51</b>
35	40	75	6	Brass	<b>4069-31</b>
35	45	80	6	Satin	<b>4070-51</b>
35	45	80	6	Brass	<b>4071-31</b>
40	40	80	6	Satin	<b>4077-51</b>
40	40	80	6	Brass	<b>4078-31</b>
40	50	90	6	Satin	<b>4081-51</b>
40	50	90	6	Brass	<b>4082-31</b>
40	60	100	6	Satin	<b>4085-51</b>
40	60	100	6	Brass	<b>4086-31</b>
45	45	90	6	Satin	<b>4087-51</b>
45	45	90	6	Brass	<b>4088-31</b>
45	55	100	6	Satin	<b>4095-51</b>
45	55	100	6	Brass	<b>4095-31</b>

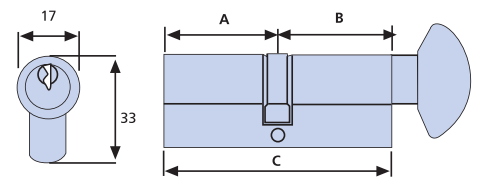
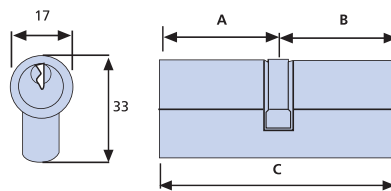
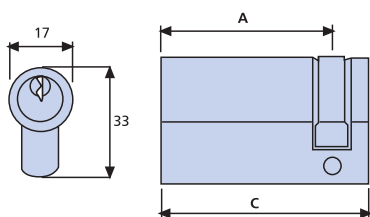
A	B	C			
<b>Double Euro Profile Thumbturn Cylinders</b>					
30	30	60	5	Satin	<b>4100-51</b>
30	30	60	5	Brass	<b>4101-31</b>

Further sizes available - please call ERA sales for further information. Oval Profile Cylinders are also available. Clam-Packed available on certain products.

Single Euro Profile Cylinder

Double Euro Profile Cylinder

Double Euro Profile Thumbturn Cylinder



All dimensions in mm.