



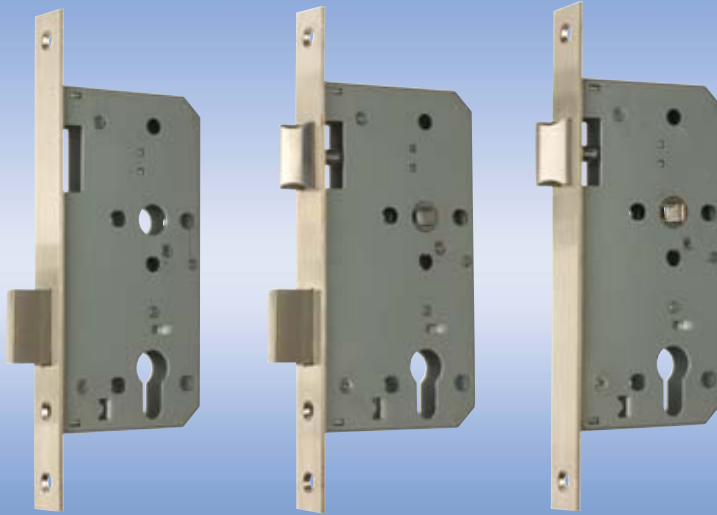
ARCHITECTURAL MORTICE LOCK RANGE

Introducing ERA's Architectural Mortice Lock range - 5 new products designed specifically to meet the needs of the specification market.

The Disability Discrimination Act (DDA) and BS8300:2001 recommend that the distance between the handle and locking mechanism on a mortice lock should be 72mm. This is to ensure that people with impaired vision and/or dexterity have unobstructed access to the keyway. By using a separate keyhole and handle set 72mm apart, which differs from a standard sashlock where the keyhole is in the handle, the new range from ERA meets these requirements.

The new Architectural Mortice Lock range available from ERA Products conforms to European Standard EN 12209 and meets the requirements of Building Regulations Part M. There are 5 new products in the range; a Sashlock, Deadlock, Mortice Latch, Bathroom Lock and a Mortice Nightlatch - all with a 20mm stainless steel double throw deadbolt.

Additional product benefits include a one piece stainless steel forend for simple door preparation, modular locksets to allow lock inter-changeability and an easily reversible stainless steel latchbolt - offering flexible fitting without the need to dismantle the lockcase. Suitability for bolt-through and un-sprung furniture, a profiled latch providing positive location and operation and a 10-year guarantee are also features of this new range.



EURO DEADLOCK

EURO SASHLOCK

EURO LATCH



EURO BATHROOM LOCK

EURO NIGHTLATCH

ORDERING DETAILS

Euro Deadlock

Stainless Steel **2001-79-1**

Classification code: 3X810G3BC00

Euro Sashlock

Stainless Steel **2002-79-1**

Classification code: 3X810G3BC20

Euro Latch

Stainless Steel **2003-79-1**

Classification code: 3X810G-BC20

Euro Bathroom Lock

Stainless Steel **2004-79-1**

Classification code: 3X810G-K020

Euro Nightlatch

Stainless Steel **2005-79-1**

Classification code: 3X810G-B020

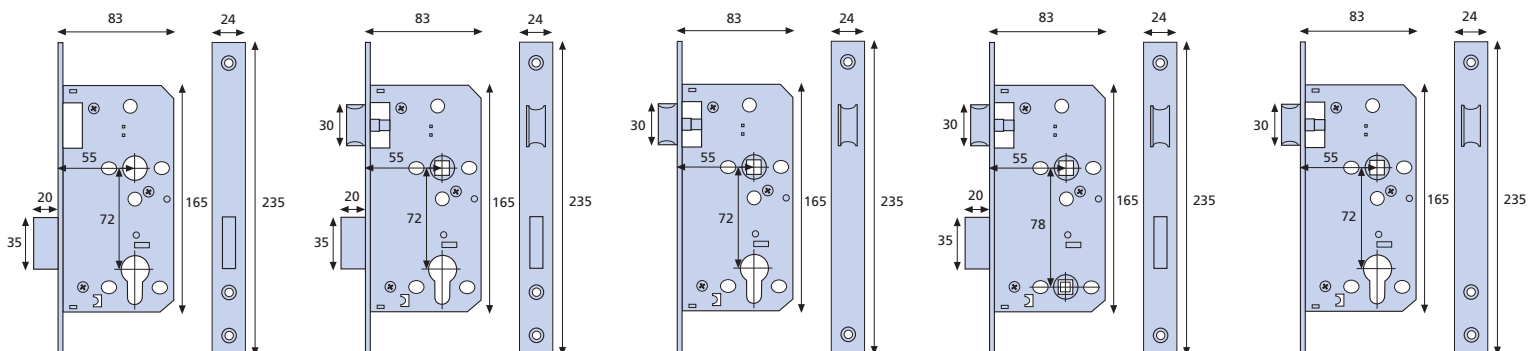
Euro Deadlock

Euro Sashlock

Euro Latch

Euro Bathroom Lock

Euro Nightlatch



All dimensions in mm.