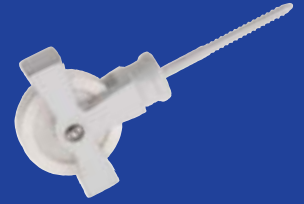


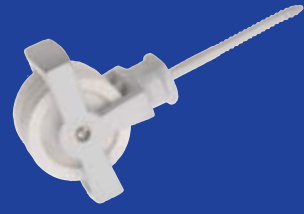
41 Single Guarded Screw Pulley - Nylon Wheel

Product Code	Size (mm)	Size (in)	Finish	Diameter of Wheel (mm)	Projection from Shoulder (mm)	Screw Projection (mm)
0041-01	44	1 3/4	White	44	68	65



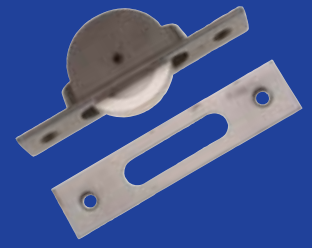
42 Double Guarded Screw Pulley - Nylon Wheel

Product Code	Size (mm)	Size (in)	Finish	Diameter of Wheel (mm)	Projection from Shoulder (mm)	Screw Projection (mm)
0042-01	44	1 3/4	White	44	68	65



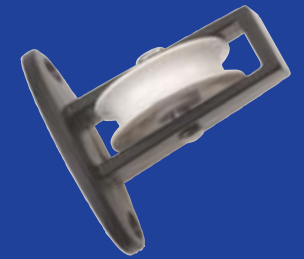
202 Axle Pulley - Nylon Wheel

Product Code	Size (mm)	Size (in)	Finish	Diameter of Wheel (mm)	Length of Plate (mm)	Width of Plate (mm)	Minimum Rebate Depth (mm)	Screw Size	No of Screw Holes
0202-03	44	1 3/4	Self Colour, Brass Face	44	113.7	23.7	35	8	2
0202-08	44	1 3/4	Self Colour	44	113.7	23.7	35	8	2



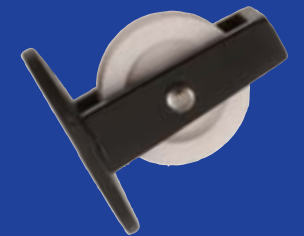
264 Upright Pulley - Wheel Across Plate

Product Code	Size (mm)	Size (in)	Finish	Diameter of Wheel (mm)	Length of Plate (mm)	Width of Plate (mm)	Projection (mm)	Screw Size	No of Screw Holes	To suit Rope Diameter (mm)
0264-10	38	1 1/2	Black	38	52	25.4	50	8	2	8



268 Upright Pulley - Wheel Along Plate

Product Code	Size (mm)	Size (in)	Finish	Diameter of Wheel (mm)	Length of Plate (mm)	Width of Plate (mm)	Projection (mm)	Screw Size	No of Screw Holes	To suit Rope Diameter (mm)
0268-10	38	1 1/2	Black	38	52	25.4	50	8	2	8



260 Single Line Pulley with Hook

Product Code	Size (mm)	Size (in)	Finish	Diameter of Wheel (mm)	Overall Case Length (mm)	To suit Rope Diameter (mm)
0260-38-10	38	1 1/2	Black	38	106	8



261 Single Line Pulley

Product Code	Size (mm)	Size (in)	Finish	Diameter of Wheel (mm)	Overall Case Length (mm)	To suit Rope Diameter (mm)
0261-38-10	38	1 1/2	Black	38	80	8



GENERAL FITTINGS

2151 Trap Door Ring

Product Code	Size (mm)	Size (in)	Finish	Avg Gauge of Metal (mm)	Avg Gauge of Handle (mm)	Screw Size	No of Screw Holes
2151-10	89	3½	Black	2.2	8	8	4

44 Handle

Product Code	Size (mm)	Size (in)	Finish	Screw Size	No of Screw Holes
0044-10	152	6	Black	8	4

246 Chest Handle

Product Code	Size (mm)	Size (in)	Finish	Avg Gauge of Metal (mm)	Screw Size	No of Screw Holes
0246-10	102	4	Black	2	10	4

55 Plain Pattern Button

Product Code	Size (mm)	Size (in)	Finish	Screw Size	No of Screw Holes
0055-09	51	2	Zinc Plated	10	1

150 Cleat Hook

Product Code	Size (mm)	Size (in)	Finish	Projection (mm)	Screw Size	No of Screw Holes
0150-102-01	102	4	White	21	8	2
0150-102-17	102	4	Electro Galvanised	21	8	2
0150-127-01	127	5	White	22	8	2
0150-127-17	127	5	Electro Galvanised	22	8	2

151 Rack End

Product Code	Size (mm)	Size (in)	Finish	To Suit Rod Width (mm)	To Suit Rod Diameter (mm)
0151-01	368	14½	White	35	16