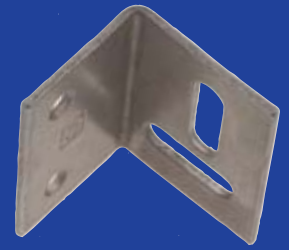


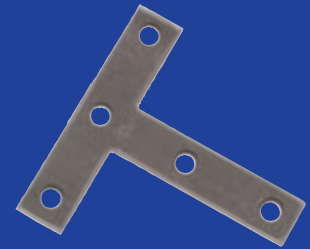
315 Angle Stretcher Plate

Product Code	Size (mm)	Size (in)	Finish	Avg Guage of Metal (mm)	Screw Size	No of Screw Holes
0315-09	38	1 1/2	Zinc Plated	1.4	8	4



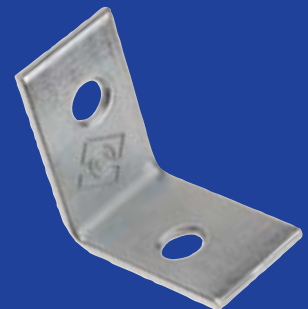
318 Tee Plate

Product Code	Size (mm)	Size (in)	Finish	Avg Guage of Metal (mm)	Screw Size	No of Screw Holes
0318-76-09	76x16	3	Zinc Plated	1.85	8	5
0318-102-09	102x19	4	Zinc Plated	1.9	8	5



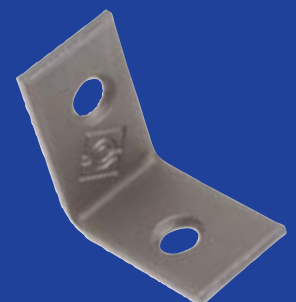
319 Corner Brace - Inside or Outside Fixing

Product Code	Size (mm)	Size (in)	Finish	Avg Guage of Metal (mm)	Screw Size	No of Screw Holes
0319-25-09	25x15	1	Zinc Plated	1.4	6	2
0319-25-19	25x15	1	Electro Brassed	1.4	5	2
0319-38-09	38x16	1 1/2	Zinc Plated	1.8	5	4
0319-38-19	38x16	1 1/2	Electro Brassed	1.8	5	4
0319-51-09	51x16	2	Zinc Plated	1.8	5	4
0319-51-19	51x16	2	Electro Brassed	1.8	5	4
0319-63-09	63x16	2 1/2	Zinc Plated	1.8	5	4
0319-63-19	63x16	2 1/2	Electro Brassed	1.8	5	4
0319-76-09	76x19	3	Zinc Plated	1.9	7	6
0319-76-19	76x19	3	Electro Brassed	1.9	7	6
0319-102-09	102x22	4	Zinc Plated	2.2	6	6
0319-127-09	127x24	5	Zinc Plated	2.3	7	6
0319-152-09	152x24	6	Zinc Plated	2.3	8	6



320 Corner Brace - Inside Fixing

Product Code	Size (mm)	Size (in)	Finish	Avg Guage of Metal (mm)	Screw Size	No of Screw Holes
0320-25-09	25x15	1	Zinc Plated	1.4	6	2
0320-38-09	38x16	1 1/2	Zinc Plated	1.4	6	4
0320-50-09	50x16	2	Zinc Plated	1.8	7	4
0320-63-09	63x16	2 1/2	Zinc Plated	1.8	7	4
0320-75-09	75x19	3	Zinc Plated	1.9	7	6
0320-102-09	102x22	4	Zinc Plated	2.2	8	6
0320-127-09	127x24	5	Zinc Plated	2.3	8	6
0320-152-09	152x24	6	Zinc Plated	2.3	10	6



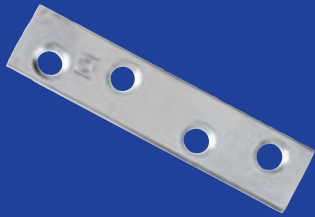
REPAIR PLATES

324 Corner Plate



Product Code	Size (mm)	Size (in)	Finish	Avg Gauge of Metal (mm)	Screw Size	No of Screw Holes
0324-51-09	51x16	2	Zinc Plated	1.5	5	4
0324-63-09	63x16	2½	Zinc Plated	1.5	7	4
0324-76-09	76x19	3	Zinc Plated	1.85	8	4
0324-102-09	102x22	4	Zinc Plated	1.9	8	6
0324-127-09	127x24	5	Zinc Plated	1.85	8	6
0324-152-09	152x24	6	Zinc Plated	2.4	8	8

325 Mending Plate



Product Code	Size (mm)	Size (in)	Finish	Avg Gauge of Metal (mm)	Screw Size	No of Screw Holes
0325-76-09	76	3	Zinc Plated	1.9	5	4
0325-102-09	102	4	Zinc Plated	1.6	5	4
0325-127-09	127	5	Zinc Plated	1.9	5	4
0325-152-09	152	6	Zinc Plated	2.5	5	4