

WINDOW BOLT

ref 853/854

To fit a Window Bolt you will require - a drill and 12mm drillbit, a bradawl (or 2.5mm drillbit), posidriv screwdriver, chisel and pencil.

Easy fitting guide

A Close window and select position of Window Bolt(s).

Side/Top and Pivot Hinged Windows

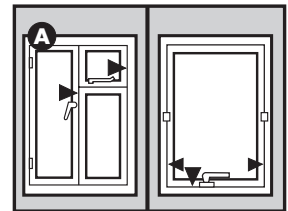
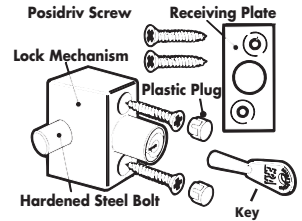
B Place receiving plate against outer edge of fixed frame and mark position of holes.
Drill a 12mm hole to depth of 12mm and screw receiving plate to fixed frame. (Recess receiving plate if necessary.)

C With window bolt in locked position align bolt to receiving plate and position on opening frame.
Mark position of holes, and screw lock mechanism to opening frame.
Check operation of lock and window.
Fit plastic plugs to lock mechanism.

Operation - push bolt in to lock. Turn key anti-clockwise to open.

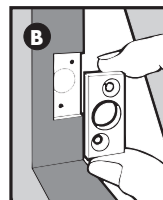
Crime prevention tip - we recommend fitting 2 window bolts on pivot windows. These should be fitted approximately 50mm up from the sill.

Maintenance - use a moist cloth only to clean all types of finish, household abrasives or solvents may affect the surface finish.



Hinged

Pivot



Hinged and Pivot

