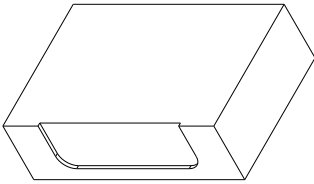




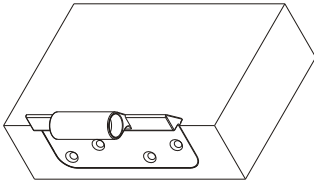
grouphomesafe

CHALLENGER 3D BUTT HINGES FITTING INSTRUCTIONS (COMPOSITE DOOR)

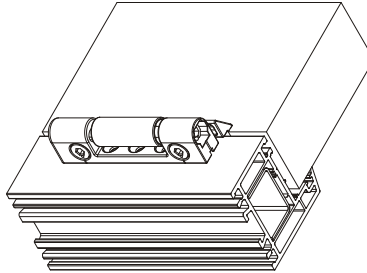
1 ROUTE SLAB WITH $\varnothing 20$ CUTTER



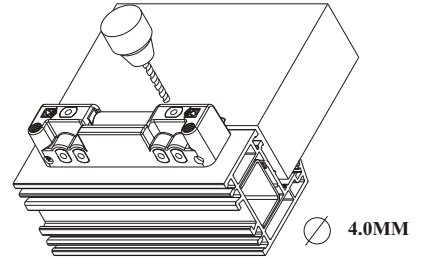
2 FIT THE FLAG TO SLAB AND PRE-DRILL HOLES SECURE WITH SCREWS



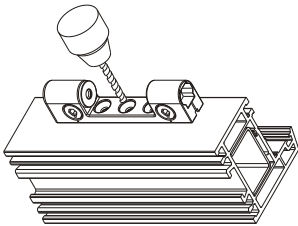
3 LOWER THE SLAB INTO THE FRAME, ENSURE CORRECT PLACEMENT, CLAMP IF NECESSARY



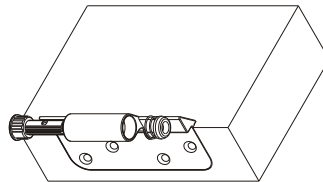
4 CLIP JIG UNDER FLAG BARREL. DRILL THE TWO HOLES FOR THE HINGE PINS



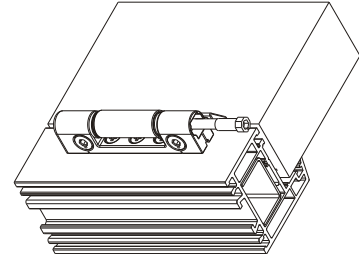
6 LIFT THE SLAB CLEAR, FIT THE HINGE BODY AND EITHER PRE-DRILL OR FIX WITH SELF DRILLING SCREWS



6 FIT THE TWO MAIN BUSHES INTO THE FLAG BARREL (SPRUNG BUSH TO THE TOP).



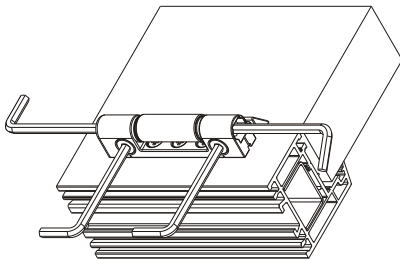
7 LOWER THE SLAB INTO THE FRAME ALLOWING THE FLAG BARREL TO LOCATE INTO THE HINGE BODY.



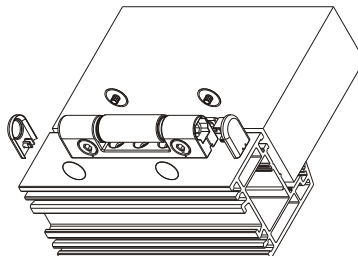
FIT THE HINGE PIN UNTIL THE HEAD IS BELOW THE HEIGHT OF THE TOP OF THE HINGE BODY

8 LATERAL AND VERTICAL ADJUSTMENT ARE PRE-SET. THE HINGE PIN SHOULD BE SET SO THAT THE ALIGNMENT MARK POINTS TOWARDS THE SLAB.

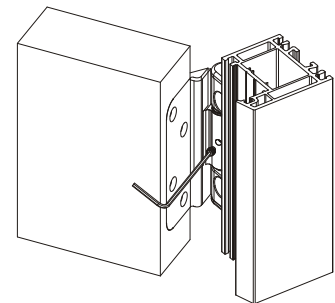
OTHER ADJUSTMENTS CAN BE MADE AS NECESSARY.



9 FIT COVER CAPS IF REQUIRED. THE TOP CAP MUST BE FITTED AS IT LOCKS THE HINGE PIN IN PLACE.



10 IF REQUIRED FIT THE SECURITY SCREW. DO NOT OVER-TIGHTEN.



ERA
Straight Road, Short Heath, Willenhall,
West Midlands. WV12 5RA
Tel: 01922 490060
Fax: 01922 490044
Email: info@era-security.com