

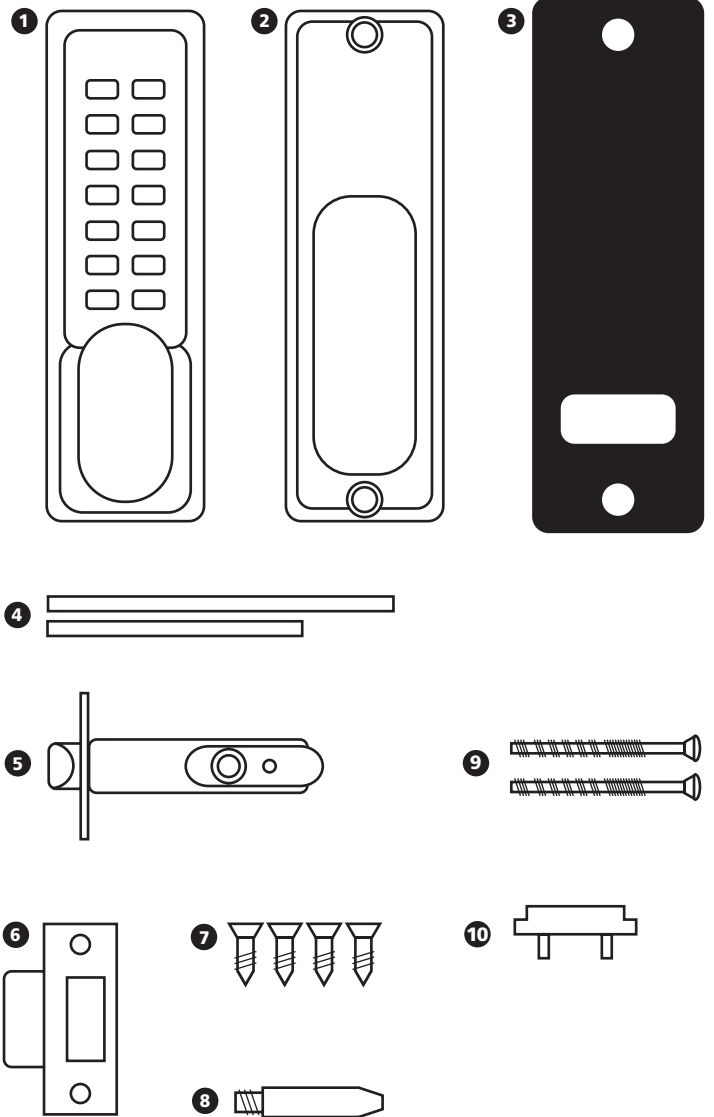


The Door Lock People

Digital Door Lock

Parts List -

1. Lock case.
2. Back plate. With a 'hold open' snib (For 3001 and 3003 only)
Without a 'hold-open' snib (For 3000 and 3002 only)
3. Neoprene seals x 2.
4. Spindles (Only one is used).
5. Latch (60mm standard).
6. Strike plate.
7. Wood screws x 4 Use with latch and strike plate.
8. Latch support post
9. Fixing bolts. 3 supplied (1 spare).
10. Plastic clip (For 3003 only).



Special Notes (For 3001 and 3003 only)

The 'Hold-open' model is equipped with a snib on the backplate. This enables the latchbolt to be held open when required

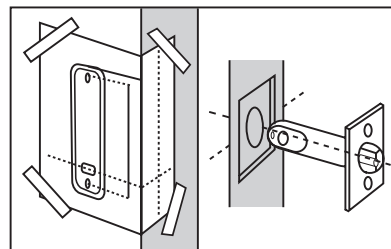
Before commencing installation, check that all parts are working correctly: Press the code according to the code card, and then the knob should turn and return easily under spring pressure. If you intend to change the code, you should do it before installing the lock. See the code change instructions.

Make sure that the lever handle of the backplate moves freely. Check that the snib will engage, and hold the handle in the 'latch-open' position, if it is a model with latch stopper.

Check that the latch bolt moves freely by pressing at the end and also by turning the flat spindle in the latch cam.

Fitting Instructions

1. APPLY THE TEMPLATE

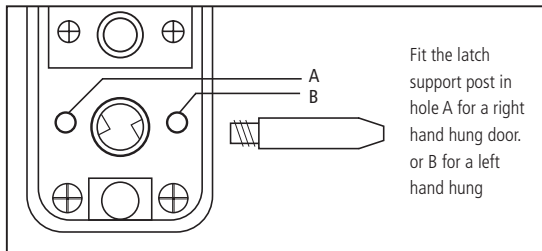


- Tape the template to the door. Make sure that you fold it along the appropriate line.
- Mark and drill all six holes.
- Use a chisel to clear the line of 4 x 8mm holes into a single slot.

POSITIONING AND FIXING THE LATCH

- Mark a central point on the 'centre line of latch' on the door edge.
- Drill a 25mm hole x 85mm deep.
- Insert the latch into the hole, and draw around the face plate.
- Remove the latch and cut a 3mm rebate so that the face plate will fit flush with the door.
- Secure the latch with the wood screws.

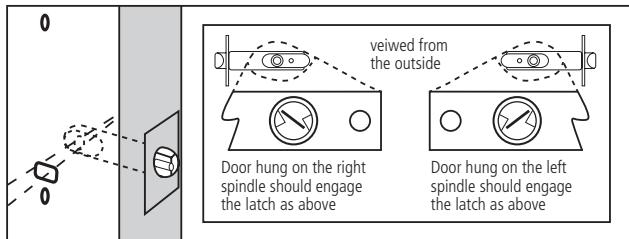
2. LATCH SUPPORT POST



3. BLUE HANDING SCREW

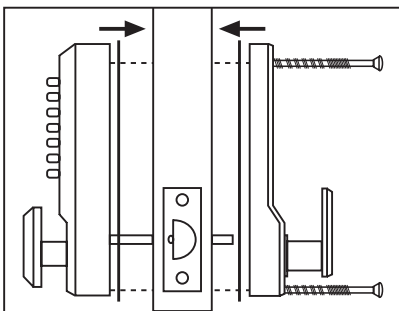
- When fitting a backplate to a left-handed door the BLUE screw must go in the right-handed hole and vice versa.

4. POSITIONING THE SPINDLE



- Select the spindle to suit the thickness of the door.
- Insert the spindle through the slot in the door and make sure that it engages the latch correctly for the hand of the door - (see inset diagram).

5. FIXING THE LOCK

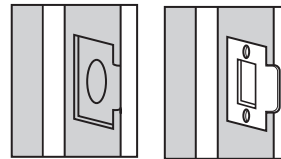


- Cut the fixing bolts to suit the door thickness, allowing at least one threaded section to screw into the lockcase.
- Hold the lock case and backplate, with the seals, onto the door with the spindle in position.
- Using the fixing bolts screw everything together through the top and bottom holes of the backplate. Before final tightening, make sure the lock is vertical, and test the mechanism to ensure that it is all moving easily.

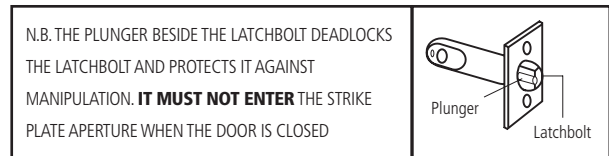
DO NOT CLOSE THE DOOR UNTIL YOU ARE SURE THAT THE CODEWORKS.

DO NOT over tighten the fixing bolts as this may cause distortion and lead to poor operation.

6. FITTING THE STRIKE PLATE



- Position the strike plate on the door so that it lines up with the flat of the latchbolt, NOT THE PLUNGER.
- Mark the inner and outer edges of the strike plate and cut a 1mm rebate so that it fits flush with the surface of the door frame.
- Drill or cut a recess for the latch bolt.
- Fit the strike plate using only one wood screw at first to ensure that it is positioned accurately. The latch bolt, and not the plunger, should enter the aperture easily, and be held without too much 'play'. When satisfied, secure the strike with the second screw.



TECHNICAL HELPLINE
01922 490 050



The Door Lock People

Ref: 3000 EASY CODE SERIES

HOW TO CHANGE YOUR CODE NUMBER

(Keep for future reference)

On the reverse of the lock you will note the numbered tumblers have RED dots on them these will become your code.

When the RED dots on the tumblers are facing outwards these are NONE coded.

To set your code:

- Press and release the 'C' button on the front; this will clear all the buttons ready.
- Using a screwdriver remove the two red coloured screws from the middle plate. **Note** - remove this plate carefully as there are two springs beneath the screw holes.
- To set your code - turn the tumblers to your preferred code.
Example - If your code is 1234 then these tumblers only will have the dots facing towards the middle of the lock and all other dots should be facing outwards. Keep a note of your code in a safe place for future reference
- Replace the top plate ensuring that the two screw springs are in place.
- Before you fit the unit check your code by pressing the 'C' button first to clear, then press in your code.
- Your code can be entered in any order (1234 can be entered as 2314) if you press a button by mistake simply press the 'C' (clear button) and start again.
- Recommended number of digits - minimum 4 maximum 6

Reduce the risk with ERA PRODUCTS LTD
Call 01922 490000 for your FREE brochure
www.era-security.com

TECHNICAL HELPLINE
01922 490 050