



*The Door Lock People*

# METAL WINDOW SNAPLOCK

## ref 904

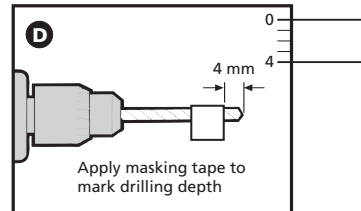
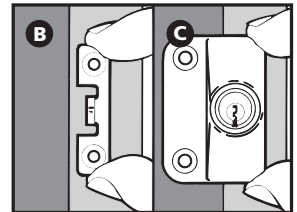
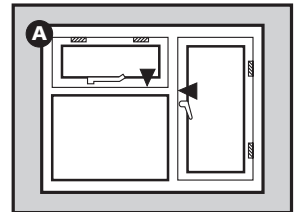
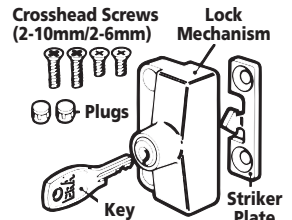
To fit a Metal Window Snaplock you will require -  
a drill, 3.5mm drillbit, screwdriver and pencil.

### Easy fitting guide

- A** Close window and select position of Metal Window Snaplock(s).
- B** Position striker plate on opening frame 1mm in from edge of frame and mark screw holes.  
Apply masking tape to drill bit **D** and drill holes to 4mm depth.  
**Caution: ensure that drill bit does not touch glass.** Screw striker plate into position with the shorter (6mm) screws.
- C** Position lock mechanism on fixed frame ensuring striker plate snaps into the lock mechanism centrally. Mark screw holes.
- D** Drill holes in fixed frame and screw lock mechanism to the frame with the longer (10mm) screws. Check lock operation. Insert plastic plugs into lock mechanism screw holes.

**Operation** - locks automatically when closing window. Turn key clockwise to open.

**Security tips** - we recommend fitting locks to all hinged windows (even small top hinged windows) for extra security.



Reduce the risk with ERA PRODUCTS LTD  
Call 01922 490000 for your FREE brochure  
[www.era-security.com](http://www.era-security.com)

**TECHNICAL HELPLINE**  
**01922 490 050**